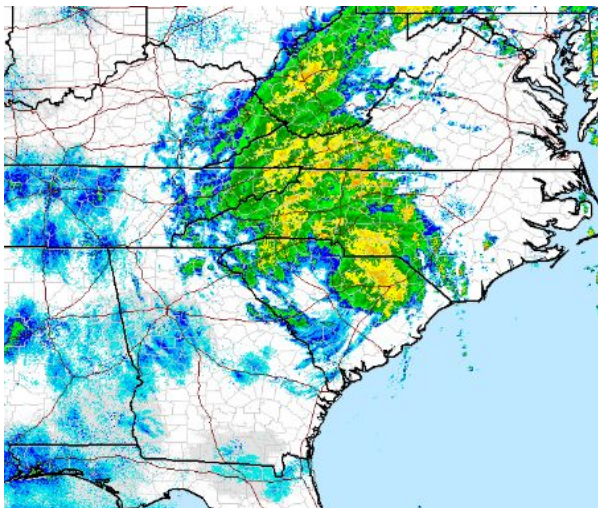


Tropical Storm Michael Outlook for Thursday, 10/11

Good Morning Kepler51 Users,

Michael has continued to steadily weaken since making landfall yesterday afternoon over the Florida Panhandle and is now rapidly progressing through the coastal states of the Southeast. Michael is now a tropical storm with maximum sustained winds of 50 mph, with tropical storm-force winds still extending up to 160 miles outward from the center. As of 9:00 am EDT this morning, Michael is centered over the central portion of South Carolina and is moving at a brisk pace of 21 mph towards the northeast.



*Image 1. Radar imagery of Tropical Storm Michael over the southeastern U.S. on Thursday morning.
Source: The National Weather Service*

STORM TRACK AND INTENSITY

Tropical Storm Michael is forecast to continue with its same general northeastward movement today as it races through the Southeast before ultimately reemerging over the Atlantic Ocean off the east coast of Virginia. This reemergence over water is forecast to occur just before or after midnight tonight, after which adverse conditions in the Southeast and Mid-Atlantic are expected to come to end.

Throughout this time period, Michael's winds are expected to continue gradually weakening, however tropical storm-force winds and heavy rainfall are still expected to impact a wide swath of the Carolinas and eastern Virginia for the remainder of the day (as seen in Image 3). There is also a chance

that Michael could strengthen slightly as it reemerges over the Atlantic Ocean late tonight which could possibly bring renewed tropical storm-force wind speeds to the east coast of Virginia, however any of these possible effects are expected to be short-lived.

TRANSPORTATION EFFECTS

Michael will continue to have widespread impacts on transportation throughout the eastern U.S. today both due to its direct impacts from wind and rain as well as its lingering effects in the hard-hit portions of the eastern Gulf Coast.

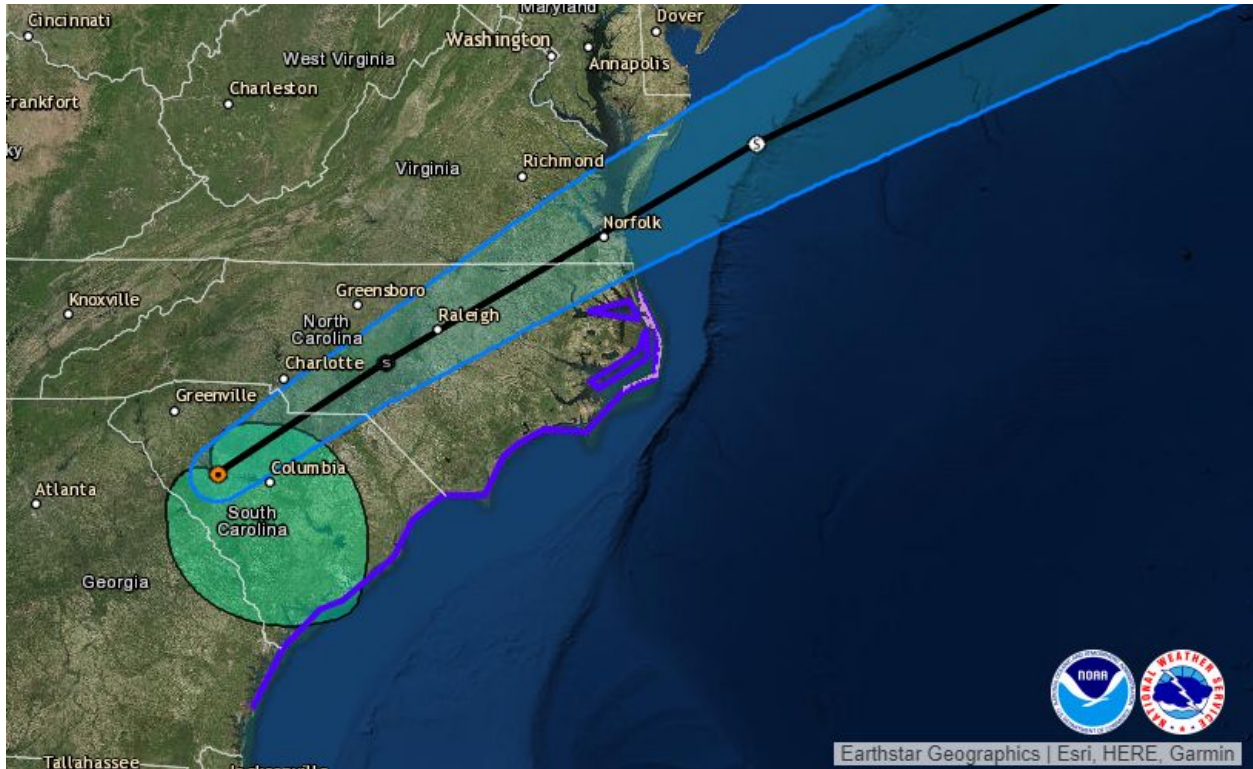


Image 2. Remaining forecast track and radii of tropical storm-force winds for Hurricane Michael on Thursday morning.

Source: The National Hurricane Center

Transportation conditions throughout the Southeast are expected to remain highly dangerous throughout the day today as Michael quickly progresses through the region today. Widespread tropical storm-force winds along with torrential rainfall will reduce visibilities along the storm's path to near-zero for a few hours after the initial onset of the storm, with the most severe effects expected throughout the central portions of the Carolinas today. Widespread downed trees and power lines along with some localized flooding are likely to result in numerous local road closures today, particularly in areas impacted by Hurricane Florence a few weeks prior. As Michael progresses away from the Southeast late tonight, Interstate transit conditions are expected to return to normal, however lingering local road closures due to road blockages are likely to persist through the end of the weekend.

Meanwhile along the eastern Gulf Coast, transportation is likely to remain near impossible in the most heavily impacted areas due to the ongoing effects of road blockages, flooding, and road damage. Roads and highways directly along the coastline stretching from Panama City to Apalachicola, FL are expected to remain impassable for the next several days as cleanup and repair processes are completed, particularly along U.S. Route 98, which sustained heavy damage from the storm surge of Michael. Even after roads are reopened, transportation throughout these areas is likely to remain very limited for at least the next couple of weeks.

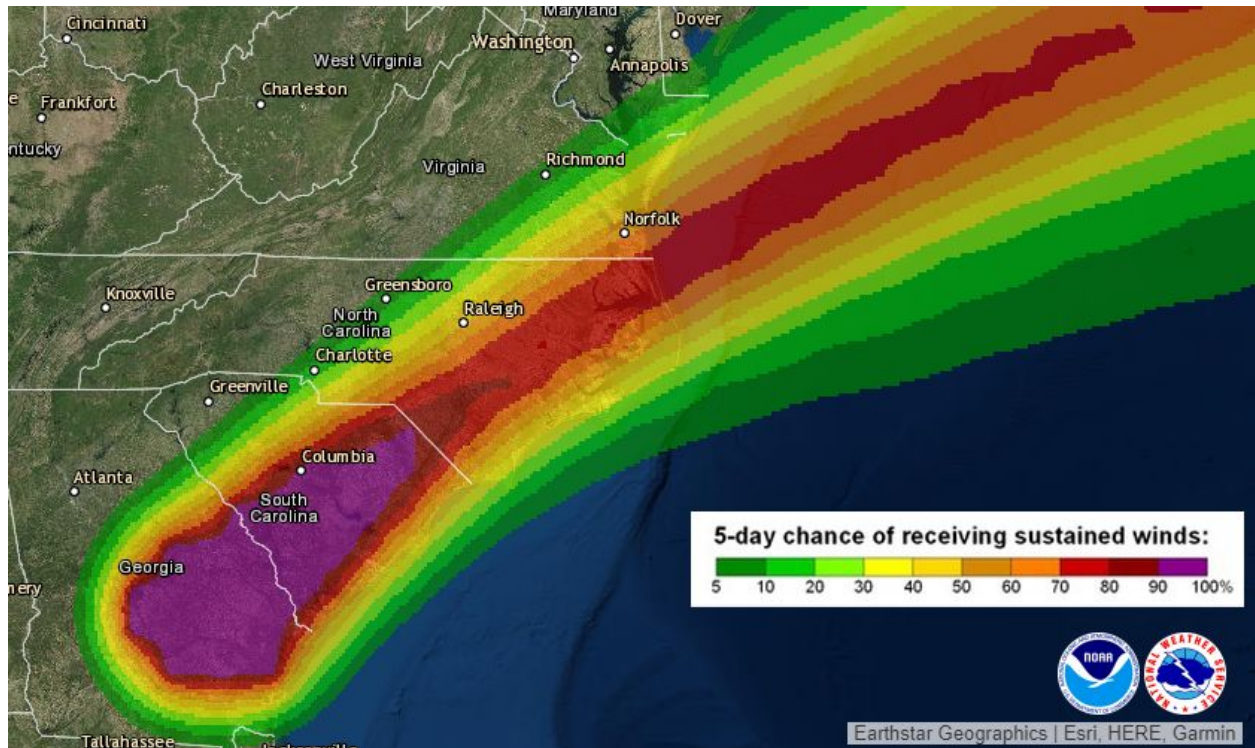


Image 3. Probabilities of tropical storm-force winds by area for the remainder of Tropical Storm Michael's lifetime over the United States.

Source: The National Hurricane Center

Cities and lanes impacted by extreme wind and flooding (5-7 day disruption after landfall):

- Panama City, FL
- Mexico Beach, FL
- Apalachicola, FL
- Carrabelle, FL
- U.S. Route 98

Cities and lanes between with high wind and flooding risk (3-4 day disruption after landfall):

- Cedar Key, FL
- Interstate 10

Cities and lanes between with moderate wind risk (1-2 day disruption after landfall):

- Pensacola, FL
- Mobile, AL
- Tallahassee, FL
- Tampa, FL
- Atlanta, GA
- Columbia, SC
- Charlotte, NC

Raleigh, NC
Norfolk, VA